



# GW INDUSTRIAL

BUILD FARM MINE



## Kubota Power Packs

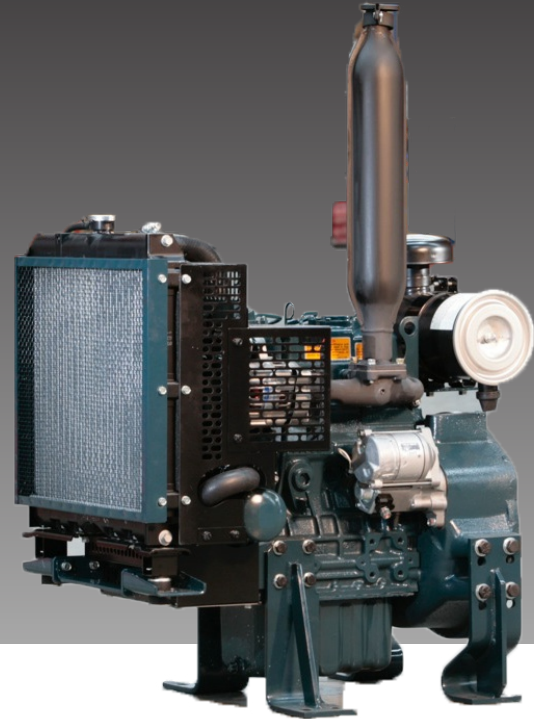
**Indirect injection, (ETVCS) Compact, Low Noise & Environmentally Friendly**

### Features & Benefits

- All Kubota Power Packs come fully assembled
- All have two options for order, with or without engine control unit
- Engine control unit is the reliable Deep Sea Engine Control
- Guarding meets full OH&S requirements

### All Power Packs come fitted with

- Radiator & Guarding
- Coolant tank
- Muffler
- Fuel filter
- Engine feet
- Air Cleaner
- Electric lift pump (V2203 only)
- Temperature switch



### Base - Power Pack

MODEL	ITEM CODE	ENGINE CODE	NET INTERMITTENT	FLYWHEEL & HOUSING
D1105-PP	A0200-00040	D1105-E2BB-SAE1	25.0hp (18.7kW) @ 3000rpm	SAE # 5 (6 1/2" Flywheel)
V1505-PP	A0200-00020	V1505-E2BB-AE-1	33.5hp (25.0kW) @ 3000rpm	SAE # 5 (6 1/2" Flywheel)
V2203-PP	A0200-00000	V2203-E2B-SAE2	46.0hp (34.3kW) @ 2800rpm	SAE # 4 (7 1/2" Flywheel)

All base power packs are delivered fully assembled complete with: Radiator and guarding, coolant tank, muffler, fuel filter, air cleaner, temperature switch, engine feet, and electric lift pump (V2203 only)

### Electrical - Power Pack

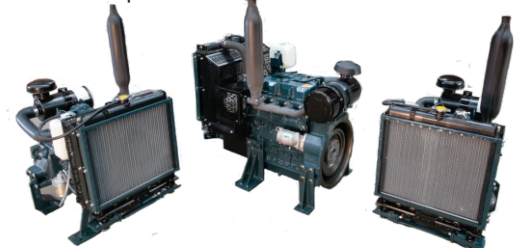
MODEL	ITEM CODE	ENGINE CODE	CONTINUOUS POWER	FLYWHEEL & HOUSING
D1105-PPE	A0200-00050	D1105-E2BB-SAE1	25.0hp (18.7kW) @ 3000rpm	SAE # 5 (6 1/2" Flywheel)
V1505-PPE	A0200-00030	V1505-E2BB-SAE-1	33.5hp (25.0kW) @ 3000rpm	SAE # 5 (6 1/2" Flywheel)
V2203-PPE	A0200-00010	V2203-E2B-SAE2	46.0hp (34.3kW) @ 2800rpm	SAE # 4 (7 1/2" Flywheel)

All electrical power packs are delivered fully assembled complete with: Radiator and guarding, coolant tank, muffler, fuel filter, air cleaner, temperature switch, electric lift pump, engine feet, Deep Sea engine control unit with weather proof harness.

### Options



- Deep Sea Engine Control Unit with Weather Proof Wiring Harness
- Electric Lift Pump



P>07 4842 9300 F>07 4842 9320

287 NEBO ROAD, MACKAY

sales@gwind.com.au