



**GWINDUSTRIAL**  
BUILD FARM MINE

**07 4842 9300**

sales@gwind.com.au www.gwind.com.au

## GENUINE

Genuine Dealerships  
Spare Parts & Engines  
Servicing, Warranty

**Perkins®**



**YANMAR**

**KOHLER**  
LOMBARDINI  
A KOHLER COMPANY



**ALLIGHTSYKES**

**CROMMELINS™**  
SUBARU PRODUCTS  
Industrial Power Products

**THOROUGHCLEAN**  
WATER BLASTERS Over-engineered — On purpose

## GENERATORS



- ◆ Petrol & Diesel Open Set
- ◆ Petrol & Diesel Inverters
- ◆ Enclosed Sets 6-300kVA
- ◆ Mine Compliant
- ◆ Submersible Pump Sets
- ◆ Parts, Repairs & Servicing

**YANMAR**

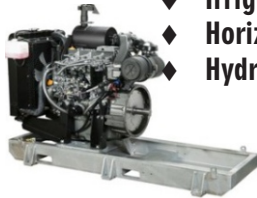


## ENGINES & PARTS



### Engines

- ◆ Single Cyl Air/Oil Cooled Engines
- ◆ Multi Cylinder Water Cooled Engines
- ◆ Irrigation Pump Sets
- ◆ Horizontal Ag Sets
- ◆ Hydraulic Pump Packs



### Repowers and Rebuild Kits for

- ◆ Forklifts
- ◆ Cranes
- ◆ Boom Lift
- ◆ Construction Equipment
- ◆ Generators
- ◆ Pumps
- ◆ Irrigators
- ◆ Tractors



**BALDWIN**  
FILTERS

### Parts & Accessories

- ◆ Filters
- ◆ Belts
- ◆ Hoses
- ◆ Cables
- ◆ Mounts
- ◆ Gauges
- ◆ Solenoids
- ◆ Oils & Additives
- ◆ Gaskets
- ◆ Cleaners
- ◆ Mirrors
- ◆ Fuel Pumps
- ◆ Radiators
- ◆ Turbos
- ◆ Seats



**FUELMANAGER**

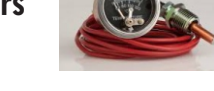
**TRIDON**

**DAYCO**



**NULON**

**MURPHY**  
by EVOvation CONTROLS



## AG PRODUCTS

**BARE-Co**  
Quality Service

**Sparex**

- ◆ Tractor Parts
- ◆ Harvester Parts
- ◆ Slasher Gearboxes



**GEOHEX**  
Erosion Control Products



## SERVICING

Experienced Small Engine  
Mechanic Servicing:

- ◆ Generators
- ◆ Pressure Cleaners
- ◆ Pumps
- ◆ Compressors
- ◆ Waka Packers



## EQUIPMENT

**THOROUGHCLEAN**  
WATER BLASTERS Over-engineered — On purpose



- ◆ Generators
- ◆ Pressure Cleaners
- ◆ Pumps
- ◆ Compressors
- ◆ Flex Tools

**MEGAJET**



## Equipment for Hire - Short or Long Term

### Balloon Lights

- ◆ Set up by one person in just minutes
- ◆ Lights up large area - up to 10,000m²
- ◆ Easy to transport (fits in a car boot)
- ◆ Safe to use among crowds
- ◆ Robust Construction
- ◆ Suits ALL worksites, mine sites, public events and all emergency situations



### Fuel Polisher

- ◆ Removes Water & Contaminants
- ◆ 12v
- ◆ Flow Rate 681/hr



### Led Light Towers

- ◆ Mine Compliant & Registered
- ◆ Excellent Fuel Economy
- ◆ 236,000 lumens
- ◆ 2-3 week run time
- ◆ 4 Units Available
- ◆ Long & Short Term Hire



**ALLIGHT**